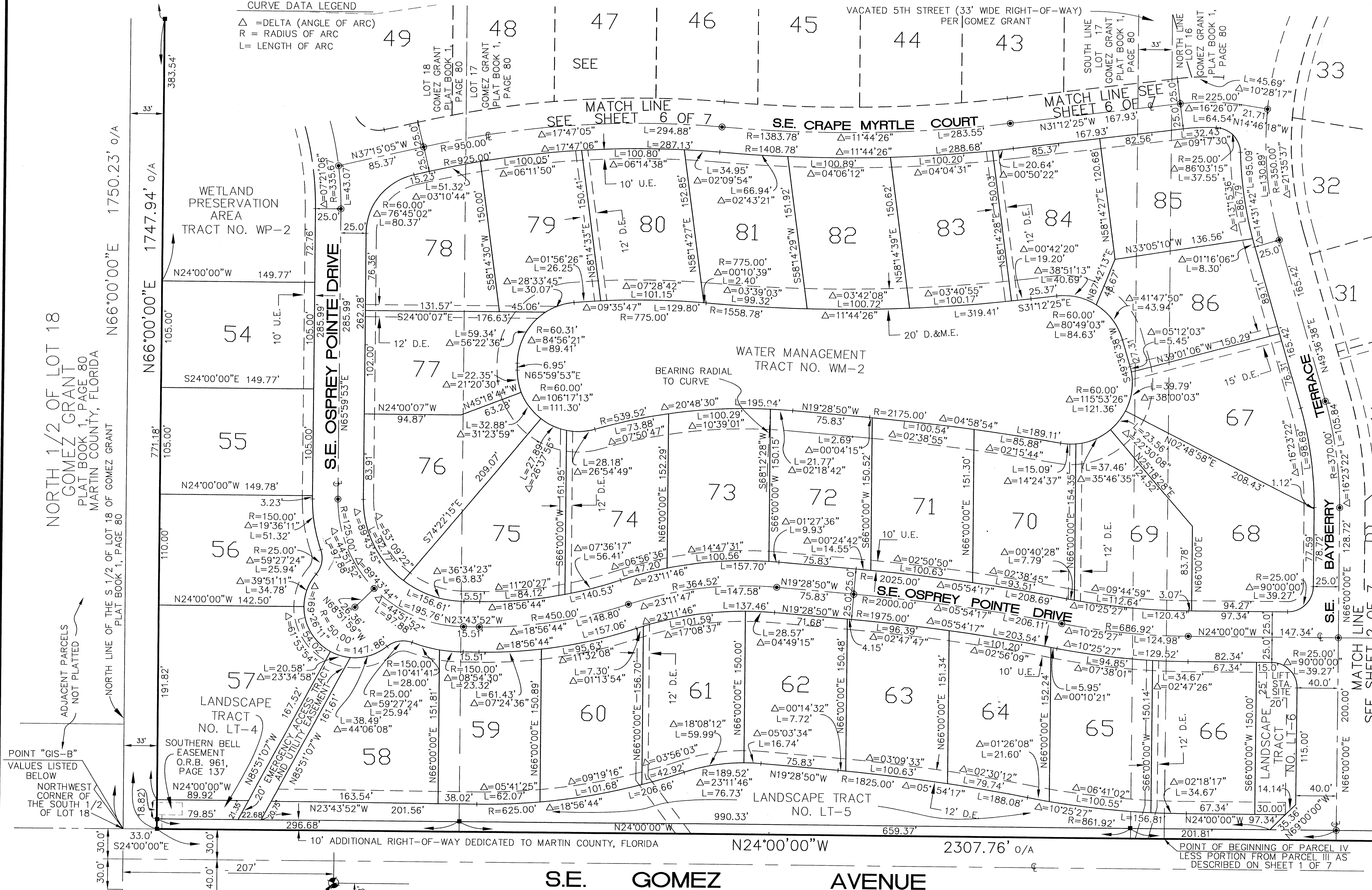
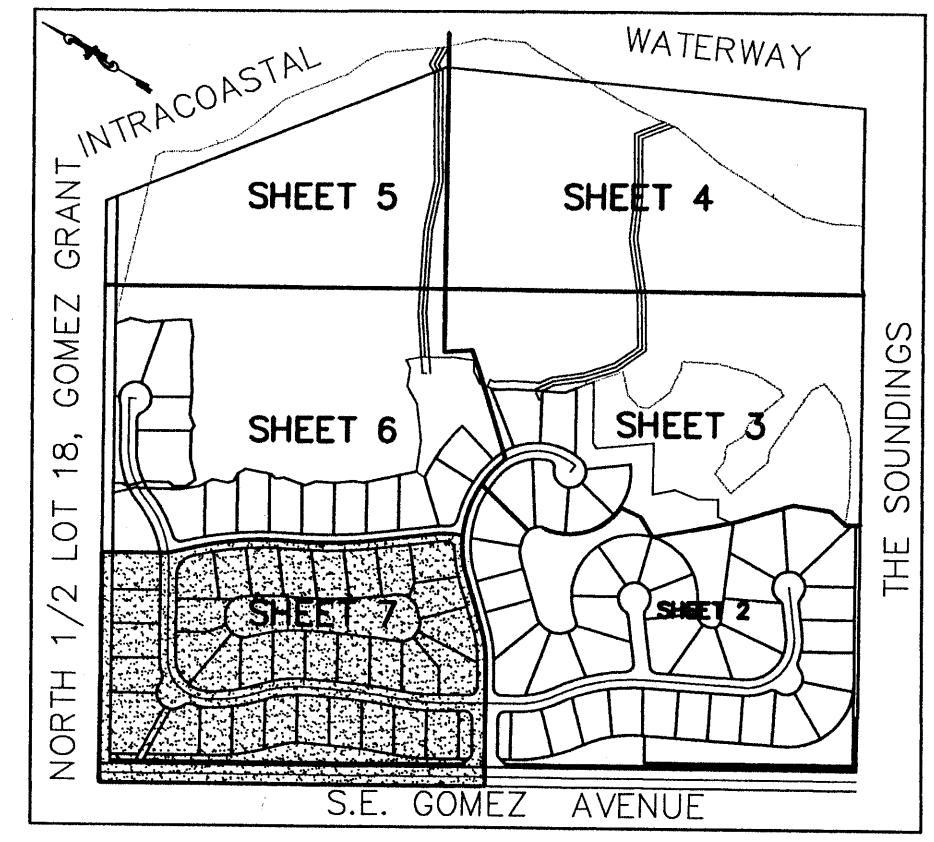
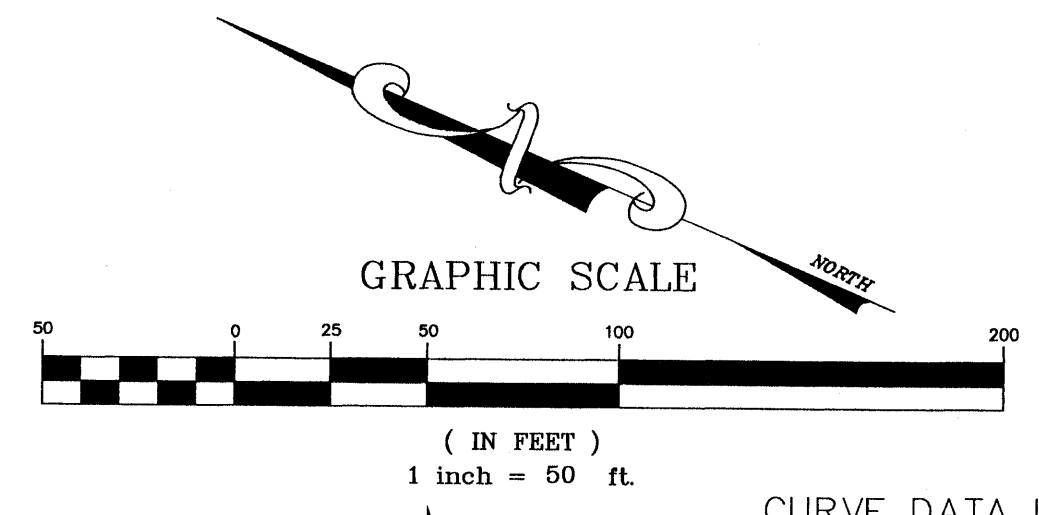
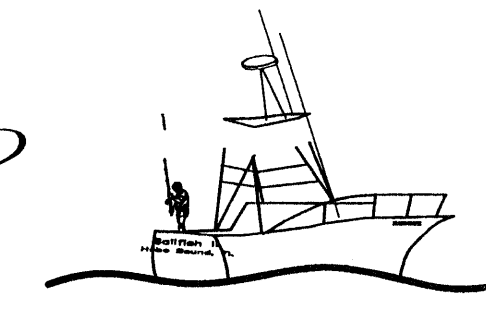


This plat was filed for record in plat book 14 page 69 Martin County, Florida public records this 15 of July, 1999.

Maucha Miller Circuit Court Martin County by Wood, D.C.

Plat Of Osprey Cove Yacht Club

A REPLAT OF LOTS 15, 16, 17 AND THE SOUTH 1/2 OF LOT 18 OF GOMEZ GRANT, PLAT BOOK 1, PAGE 80, AND A REPLAT OF TRACT-A OF THE SOUNDINGS, PLAT BOOK 5, PAGE 3 TOWNSHIP 39 SOUTH, RANGE 42 EAST, MARTIN COUNTY, FLORIDA



- LEGEND**
- D.E. DRAINAGE EASEMENT
 - U.E. UTILITY EASEMENT
 - D.&M.E. DRAINAGE AND MAINTENANCE EASEMENT
 - O.R.B. OFFICIAL RECORDS BOOK
 - PERMANENT REFERENCE MONUMENT (P.R.M.) SET 4"x4" CONCRETE MONUMENT WITH DISK STAMPED "PRM LS 4460"
 - PERMANENT CONTROL POINT (P.C.P.) (1/4" PK-NAIL WITH BRASS DISK STAMPED "PCP LS 4460")
 - ▲ LIFT STA. SITE
 - ▲ AREA DESIGNATED FOR LIFT STATION
 - EL ELEVATION (EXPRESSED IN U.S. SURVEY FEET)
 - NGVD29 NATIONAL GEODETIC VERTICAL DATUM OF 1929, REFERENCED TO MARTIN COUNTY VERTICAL CONTROL NETWORK UTILIZING BENCHMARKS "SABAL-G" (EL. 9.048 U.S. FEET) AND "WIND-G" (EL. 8.316 U.S. FEET)

- GENERAL NOTES**
- 1) THE BEARINGS SHOWN HEREON ARE BASED ON AN ASSUMED MERIDIAN WITH A REFERENCE BEARING OF N. 24°00'00" W. ALONG THE EASTERLY RIGHT-OF-WAY LINE OF S.E. GOMEZ AVENUE BETWEEN THE SOUTH LINE OF LOT 15 AND THE NORTH LINE OF THE SOUTH ONE-HALF OF LOT 18, BOTH OF THE PLAT OF GOMEZ GRANT PER PLAT BOOK 1, PAGE 80 OF THE PUBLIC RECORDS OF MARTIN COUNTY, FLORIDA, AS THE BASIS OF THE BEARING SYSTEM FOR THIS PLAT OF OSPREY COVE YACHT CLUB.
 - 2) THE FLORIDA STATE PLANE COORDINATE VALUES SHOWN ON THIS PLAT OF OSPREY COVE YACHT CLUB WERE ESTABLISHED IN ACCORDANCE WITH MARTIN COUNTY ORDINANCE NUMBER 483 AS IT RELATES TO RECORD PLATS. THE COORDINATE VALUES WERE OBTAINED BY FIELD TRAVERSE METHODS EXCEEDING THE FLORIDA MINIMUM TECHNICAL STANDARDS (61G17-6, F.A.C.) ACCURACY REQUIREMENTS OF A CLOSED GEOMETRIC FIGURE FOR "COMMERCIAL/HIGH RISK" DESIGNATION.
 - 3) NOTE: THE PLAT BEARINGS AND PLAT BEARING SYSTEM AS STATED IN GENERAL NOTES NO. 1 WILL NOT REFLECT OR AGREE WITH GRID BEARING DATA OBTAINED FROM UTILIZING OR COMPUTING VALUES SHOWN ON THIS PLAT. THE FLORIDA STATE PLANE COORDINATE SYSTEM VALUES SHOWN ON THIS PLAT WERE ESTABLISHED FOR MARTIN COUNTY'S GEOGRAPHIC INFORMATION SYSTEM (GIS) PARCEL MAP COVERAGE ONLY AND ARE NOT INTENDED FOR ANY OTHER PURPOSE.
 - 4) THERE SHALL BE NO BUILDING OR OTHER PERMANENT STRUCTURES PLACED ON OR WITHIN ANY EASEMENTS.
 - 5) THIS PLAT, AS RECORDED IN ITS ORIGINAL FORM IN THE PUBLIC RECORDS, IS THE OFFICIAL DEPICTION OF THE SUBDIVIDED LANDS DESCRIBED HEREON AND WILL IN NO CIRCUMSTANCES BE SUPPLANTED IN AUTHORITY BY ANY OTHER FORM OF THE PLAT, WHETHER GRAPHIC OR DIGITAL.
 - 6) IN THE EVENT THAT MARTIN COUNTY DISTURBS THE SURFACE OF A PRIVATE STREET DUE TO MAINTENANCE, REPAIR OR REPLACEMENT OF A PUBLIC IMPROVEMENT LOCATED THEREIN, THEN THE COUNTY SHALL BE RESPONSIBLE FOR RESTORING THE STREET SURFACE ONLY TO THE EXTENT WHICH WOULD BE REQUIRED IF THE STREET WERE A PUBLIC STREET, IN ACCORDANCE WITH COUNTY SPECIFICATIONS.
 - 7) ALL LOT LINES ARE NON-RADIAL UNLESS OTHERWISE NOTED.

POINT "GIS-B" VALUES LISTED BELOW NORTHWEST CORNER OF THE SOUTH 1/2 OF LOT 18

PROJECT BENCHMARK #1 BRASS DISK SET IN CONCRETE, TOP EAST SIDE OF DRAINAGE INLET EL. 8.10 FEET (NGVD29)

SABLEWOOD PLAT BOOK 11, PAGE 55 MARTIN COUNTY FLORIDA

QUAIL RIDGE PLAT BOOK 9, PAGE 82 MARTIN COUNTY, FLORIDA

WOODMERE PINES PLAT BOOK 7, PAGE 63 MARTIN COUNTY, FLORIDA

POINT "GIS-B" FLORIDA STATE PLANE COORDINATE VALUES
NAD83/90 FLORIDA EAST ZONE (901)
NORTHING: 1001144.01 EASTING: 936373.47 U.S. SURVEY FEET
LATITUDE: NORTH 27°05'07.14" LONGITUDE: WEST 80°08'19.80"
SCALE FACTOR: 1.00003119 COMBINED FACTOR: 1.00003562 CONVERGENCE: 00°23'31.66"

ENGINEERS INC.
CIVILIZATION ENGINEERED

909 EAST PARK AVENUE TALLAHASSEE, FLORIDA 32301
PHONE (850)841-1705 FAX (850)841-1706

203 WEST 3rd STREET STUART, FLORIDA 34994
PHONE (561)283-1413 FAX (561)220-7881

P.O. BOX 410908 MELBOURNE, FLORIDA 32941
PHONE (407)779-3723 FAX (407)779-2184